



www.witva.org

newsletter

Women in the Visual Arts, Inc.
Promoting the Visual Arts and Women Artists in South Florida



December 2010

Calendar

November 19 - 9:30 Jury Committee
12 Noon, Friday, General Meeting, Sugar Sand Park - **Teresa Kirk** - Goache & Watercolor demo

December 10 - 6-8, Friday - Wine and Cheese Party,
WITVA Art Exhibit at Whole Foods in Boca

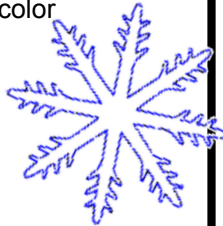
December 17 - Friday, 12 Noon - WITVA Holiday Luncheon,
Sugar Sand Park - Demo by Jeff Jakub, Watercolor

American Orchid Society -

January 4 - Take-in: 10-12

January 6 - Meet the Artists/Reception: 5-7

January 31 - Take-down: 10-12



Future Exhibits

All Florida Open Juried Exhibition - January 17- March 1, 2011
110 East Atlantic Avenue, Delray Beach

Application Enclosed:

Deadline - January 7 - Friday

Take-in - January 17, Monday, 10-12

Reception - January 27, Thursday, 5:30-9 PM
(Jazz on the Avenue)

Take-down - March 1, Tuesday, 10-12

Cornell Museum of Art- Crest Theater - Feb. 3 - March 13, 2011

Take-in: Wed. February 2, 10 AM -12 noon

Reception: Thursday, Feb 10, 2011

Take-Down: Friday, March 16, 11 - 12 noon



Rosen Gallery JCC Boca Raton - Take-in: Wed - Mar. 2

Reception: Sunday, March 6, 1-4 PM

Take-Down: Thursday - April 14

David Posnak JCC, Broward Co. - Small Show

Take-in: March 14 - Monday

Reception: March 23, 2-4 PM - Wed.

Take-down: April 27 - Sunday

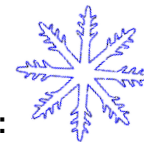
Our meetings and demos are FREE and open to the public.

INVITE YOUR FRIENDS!

President's Message

One could say that the connection between the artist, his creative expression and the viewer, or the writer and his reader, or even the musician and listener, is like having a conversation. Perhaps intense, perhaps thought provoking, and perhaps, best of all, from the artist's heart, soul and mind. Our WITVA artists have gorgeous 'conversations' --uplifting and heartfelt -- that reach into the communities. May the conversations continue forever.

Blessings always,
Mimi Donner



ABOUT YOUR DUES:

WITVA's fiscal year begins in January and continues until December 31st. A statement requesting dues for 2011 will be mailed to you in December 2010. Your dues should be paid no later than the end of February.

If your membership is dropped you will have to go through the jurying process again if you wish to exhibit your work. The dues for new members who join at the end of 2010, will be applied to 2011.

You are a valuable member of a growing organization of impact and respect in the world of art and the community. Your dues, your creativity and activity make it all happen.



Front Page Feature

HOLIDAY LUNCH

At our December 17th meeting at Sugar Sand Park we will have a special Holiday lunch. The theme will be "Winter Wonderland". Everyone is to bring a dish to share in your food category. The categories will be broken up by the 1st letter of your last name: A-F - Appetizers; G-L - Pasta/Salads; M-R - Main Dish; S-Z - Desserts
Awards will be given to the most creative and the best seasonal presentation of the food items. If you would like to make a few snowflakes to decorate the tables, please let me know. JanisLeeColon@yahoo.com or phone 954-429-1133.

WITVA EVENTS

Art, Wine and Cheese, Food Tastings and Fun at Whole Foods

Save the date Friday, December 10 from 6-8:00 pm and be sure to come support WITVA and enjoy the Wine and Cheese event at Whole Foods Market located at the University Commons on Glades Road just East of I-95. Several of our WITVA artists will be exhibiting their work throughout the store (in the Lifestyle Center, the Cafe and at the Wine Stations). All monies received that night will go to the WITVA Graduate Education Scholarship Fund.



Grace Fishenfeld has created and donated a painting for the fundraiser at Whole Foods. 100 percent of the sale of "In the Spirit" will go to the Graduate Education Scholarship Fund. You can view the painting in the Cafe the night of the Wine and Cheese event at Whole Foods Cafe.



SPECIAL EVENT!

Renowned artist from North Carolina, Jeff Jakub, will do a workshop at the home of Ann Schwartz on Thursday, December 16, from 10am to 2pm. "All that Glitters: Painting Reflective Surfaces". First 10 people to register with a check for \$35 made to WITVA and sent to Ann Schwartz, 8261 Muirhead Circle, Boynton Beach FL 33472. Any questions, please call me at 561-737-4248. His artwork can be checked out at www.jeffjakub.com.

EXCITING NEW VENUE FOR WITVA'S OPEN JURIED EXHIBIT!!

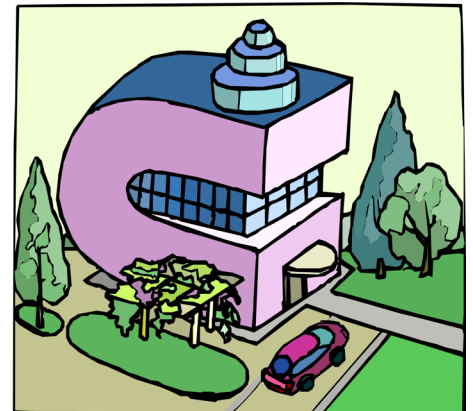
"Creative Dimensions" - January 17-March 1, 2011

110 EAST ATLANTIC AVENUE, DELRAY BEACH

Office Complex on four floors with lots of wall space and open atrium to accommodate up to 72" high and 60" wide paintings, including diptychs and triptychs. For all media: paintings, photography, mixed media, jewelry (in locked cases), sculpture in clay, stone, metal, glass, wood, fibers, paper. Nudes are acceptable but not violent representations. The exhibit is open during commercial hours or by appointment.

CASH AWARDS will be presented at the reception on Thursday, January 27 from 5:30-9:00 which coincides with Delray's Jazz on the Avenue.

OPEN EXHIBIT means it is open to any Florida artist, male or female, over the age of 18. The application, which is due by January 7, is enclosed and also available for non-members at www.witva.org.



"Enchanted Garden" American Orchid Society Show

You will find the application in this newsletter. If you would like to demonstrate your art or give a short workshop for the public on Jan. 6th from 3-5 PM please call Janice Cohen at 561 736-2589 or jcac1197@aol.com.

The admittance to the workshops and demonstrations are free, but the gardens are free only during the reception from 5-7 pm. Please note carefully the size restrictions on the application due to space requirements.

WITVA members are invited to paint or photograph for the show from now on at no charge-please use the side (back) door and ask for Edna. Our judge will be Ralph Papa, who teaches drawing and painting and is an accomplished visual artist in still photography and video. His artworks range from studio paintings using real and imaginative themes, to figurative, portraits and plein air painting.

WELCOME NEW MEMBERS:

Adelia Chuburu Derryl Kasler Maureen Sopourn Lois Whelen
Jane Cole Streitfeld Rochelle Kaplan Davine Goren

BLOOMINGDALE'S FUNDRAISER

Thank you to everyone who made this annual Event a great success! WITVA's HOSPITALART Program will be able to make the needed purchases for supplies this year. We have each of you to thank for helping. We couldn't have done it without YOU! YOU bought the tickets and went to the stores to deposit your ticket stubs!
Thank you, Gracias, Merci Beaucoup, we couldn't have done this well without EVERY ONE.

CONGRATULATIONS!!

Jane Bazinet is getting around these days. She recently won the Alabama Pastel Society Founders Award. She is also now a staff member at Lighthouse Art Center in Tequesta, Florida where she will be giving pastel workshops based on recording the participants' travels. She is also part of their museum opening on November 18. In addition, she has signed a contract with Coconut Grove Art Gallery in Miami.

Read about **Sally Cooper** in the December 2010 issue of the Artist's Magazine. She won an Honorable Mention in the Abstract/Experimental category of the magazine's 27th Annual Art Competition and her winning work "Mediterranea" is shown.



Lorraine Bader was awarded First Place for "Asian Fleurs" at the fall exhibition shared event of the Boca Raton Artists' Guild and Boca Raton High School.

YOU ARE INVITED:

Reception: Studio 6 Artists Exhibit -

Sugar Sand Park - November 17 - 5-6:30 PM

featuring the sculpture, photography and paintings of 7 artists: Lola Lichman, Susan Picard, Diane Slobotkin, Laura Kerzner, Carolyn Ordower, Fermin Presno and Dr. David Myerson.



Lola Lichman



Grace Fishenfeld

The National Association of Women Artists, Florida Chapter, is presenting a small works, multi-media art exhibition, titled *Illusions* from November 3, 2010 to January 30, 2010. The art show will be hosted on the first floor gallery of the Crest Theatre, Old School Square, located at 51 N. Swinton Avenue in downtown Delray Beach. WITVA artists who belong to the prestigious organization and are exhibiting in this event include **Grace Fishenfeld**, **Carol Staub**, and **Jane McIntyre**. You can see their work during gallery hours Monday through Friday 9:30 a.m. – 4:30 p.m. and Saturday, 10:00 a.m. – 3:00 p.m. Admission is free.



Susan Megur

The City of Palm Beach Gardens Presents Susan Megur solo show "Faces, Figures, & Fantasy"

Please attend the **Artist Reception on Nov 19. 6 - 8pm MUSIC & LITE BITE**

33 paintings will be on exhibit from Oct. 21 thru Jan. 4

Address:

PGA City Hall & Veterans Plaza
10500 N. Military Trail
exit 79C on I-95 to Military Trail



Women in the Visual Arts, Inc.
Promoting the Visual Arts and Women Artists in South Florida

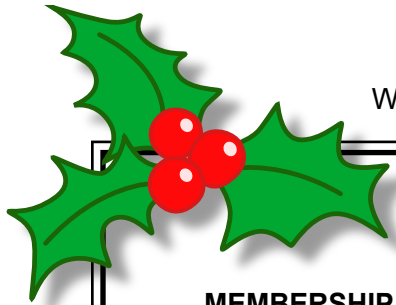
NONPROFIT
US POSTAGE
PAID
BOCA RATON, FL
PERMIT NO.
1982

P.O. Box 880668
Boca Raton, FL 33488-0668
Tel: 561-750-9401
website: www.witva.org

Current Resident, Or :

WITVA is a 501(c)(3) organization and all donations are tax deductible to the fullest extent of the law.
All solicitations and donations are retained 100% by the organization. #CH12388

A COPY OF THE OFFICIAL REGISTRATION AND FINANCIAL INFORMATION MAY BE OBTAINED FROM THE DIVISION OF CONSUMER SERVICES BY CALLING TOLL-FREE (800-435-7352) WITHIN THE STATE. REGISTRATION DOES NOT IMPLY ENDORSEMENT, APPROVAL, OR RECOMMENDATION BY THE STATE.



WITVA'S Newsletter is published on our website: www.witva.org

PEOPLE TO CONTACT

MEMBERSHIP: Francene Levinson – 561-883-3545

JURYING FOR EXHIBITION: Sally Cooper, 954-753-0654, sallycooperart@aol.com

CHANGE OF ADDRESS: harrietbw@me.com

TO RECEIVE EMAIL, CHANGE EMAIL: Gloria Brand – 561-447-7670, witva2010@gmail.com

NEWSLETTER NEWS: Laura Kerzner – Lkerz@comcast.net

EXHIBITIONS: Ann Schwartz -561-737-4248, annschwartz322@aol.com

DEMOS & LECTURES: Jane McIntyre – 561-394-5562

PUBLICITY and PUBLIC RELATIONS: Jane Jordan - 561-735-7147, jjordan711@bellsouth.net

DONATIONS IN HONOR / MEMORY OF: Donna Fuller - Fuller9574@bellsouth.net